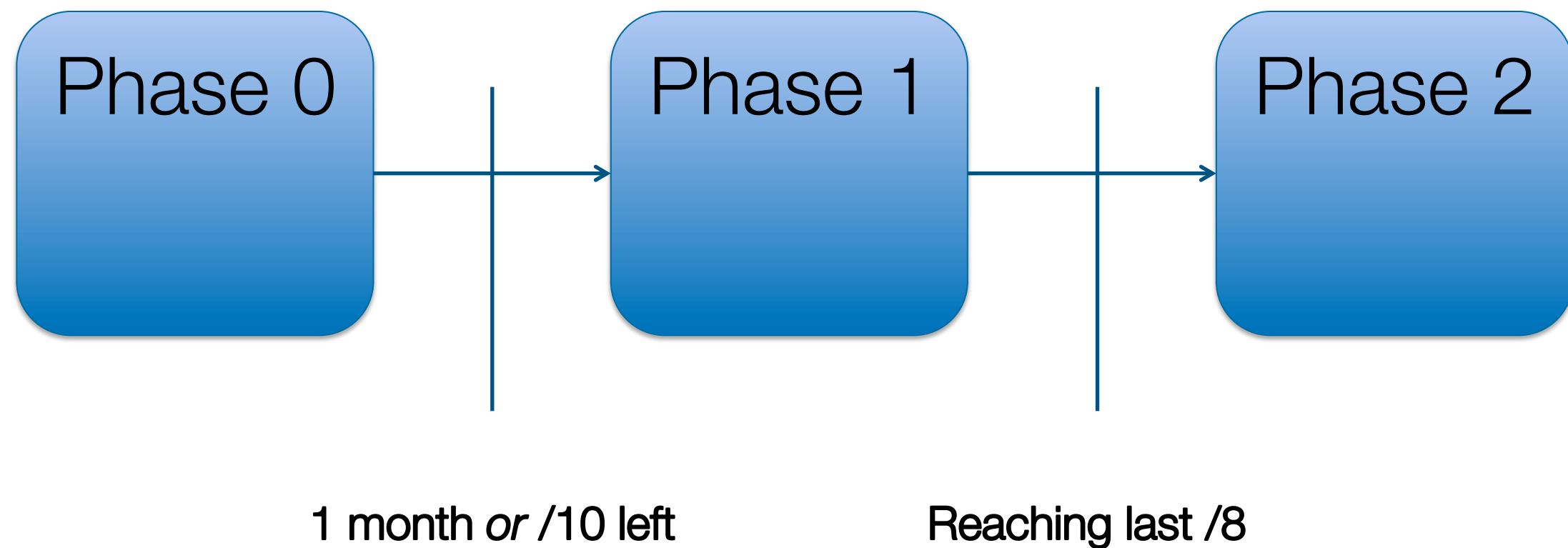


IPv4 Final Distribution

Andrea Cima
Registration Services



Phased Approach



Phase 0

- New and ongoing requests for IPv4 space routed to a dedicated ticket queue
- IPv4 graphs on www.ripe.net
 - IPv4 available pool
 - Number of requests for IPv4 addresses in the wait queue
 - Number of hours a request for IPv4 addresses is waiting for a reply
- Informed all requesters, members and potential members of the current situation

Phase 0

- Escalation evaluation process for large requests
 - /15 or larger for PA, /18 or larger for PI
 - Two IP Resource Analysts (IPRAs)
 - The Registration Services Manager
 - The Policy Development Officer
 - Two Senior Managers

Phase 1

- Started on 4th September 2012
- When 1 month *or* a /10 left of IPv4 address space available
- IPRAs working in pairs
 - Fairness, consistency and transparency
 - Longer response times
- Change in ‘call back’ procedure
 - Requester called only when ticket at top of the queue
- Approvals artificially delayed until 9:00 next morning
 - Allowed for additional checks

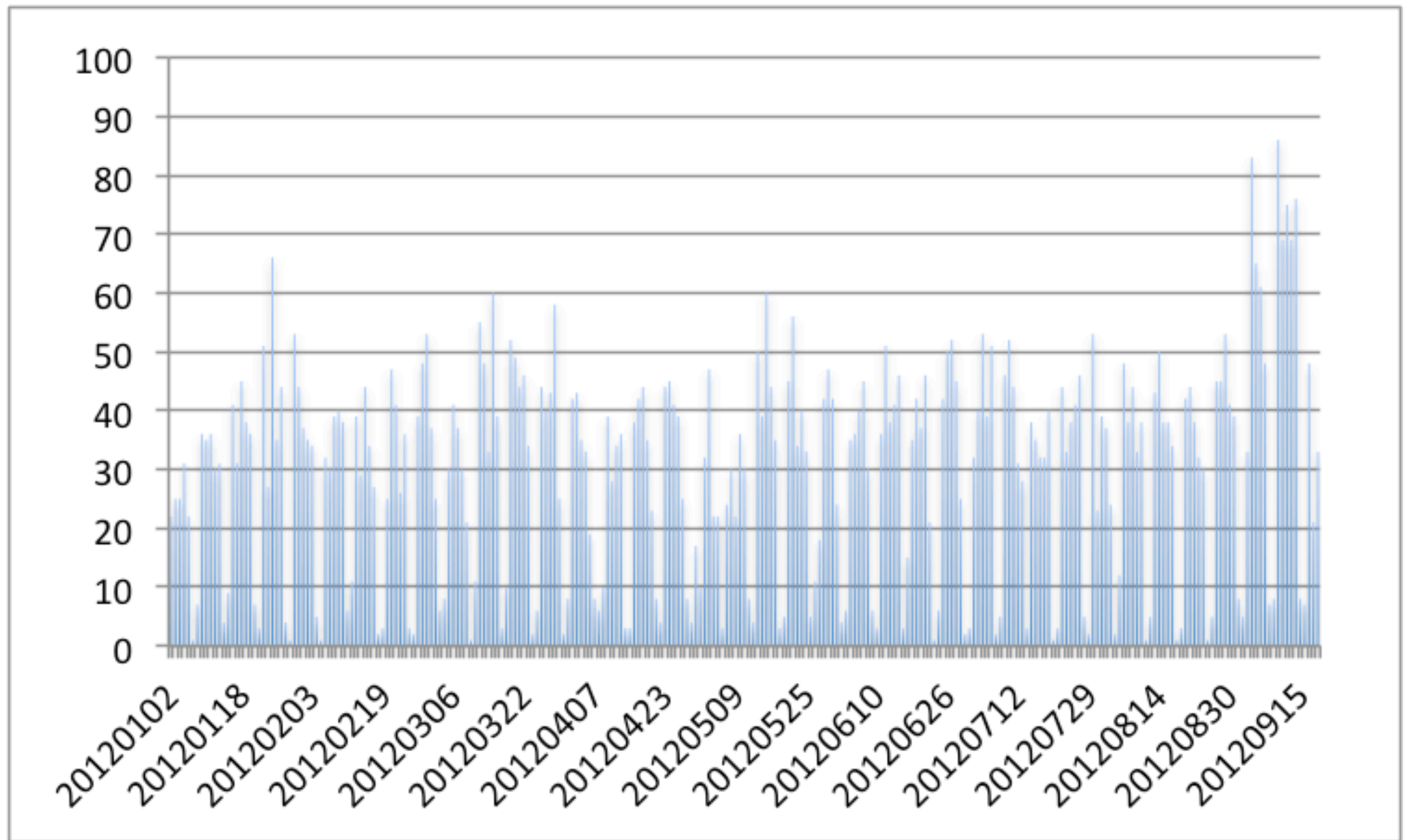
Phase 2

- Started on 14th September 2012
- When the RIPE NCC reached the last /8
- Members can receive **one** /22 (1,024 IPv4 addresses), even if they can justify a larger allocation
 - LIRs must already have an IPv6 allocation from an upstream LIR or the RIPE NCC
- No new IPv4 Provider Independent (PI) address space is being assigned

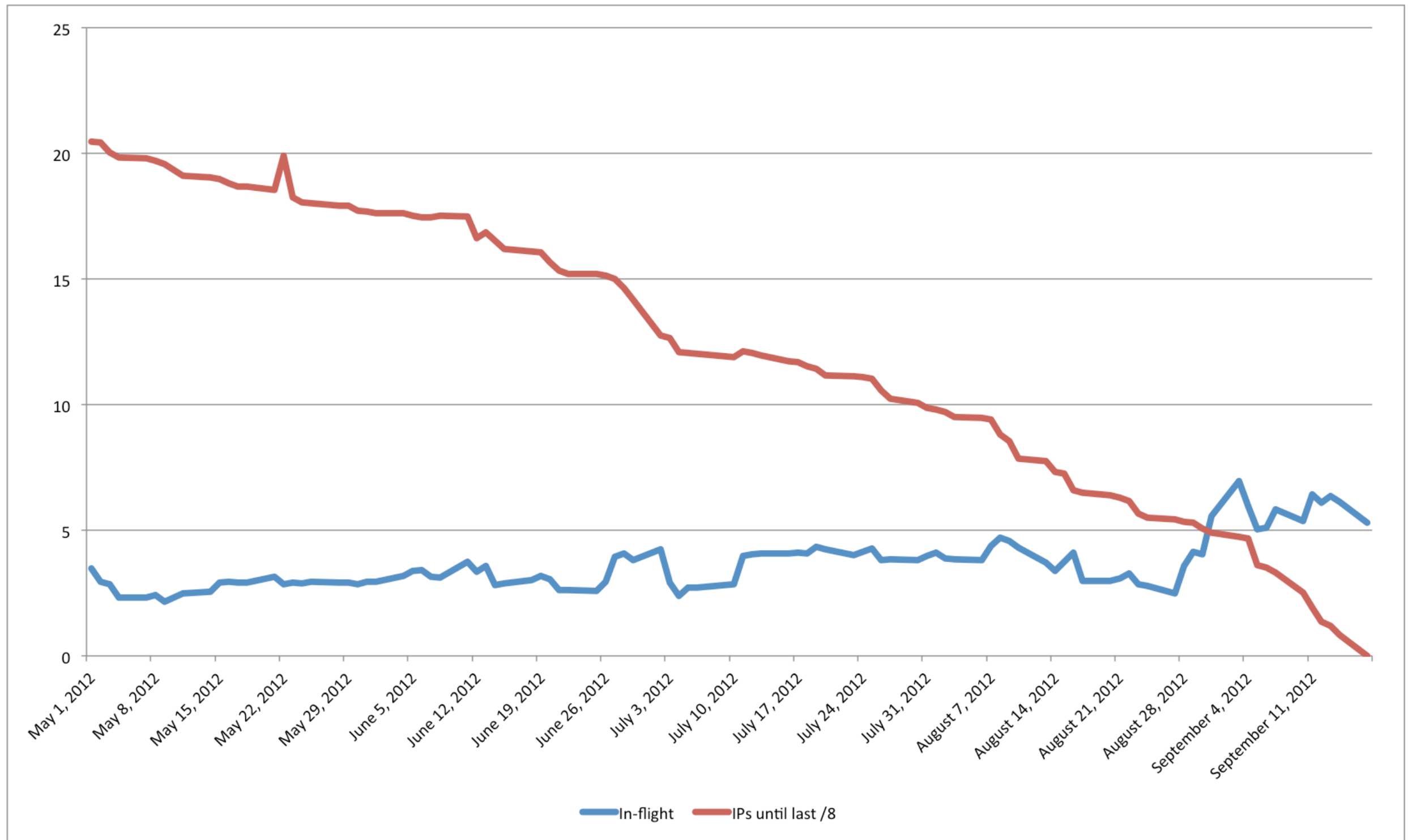
Impact On RS Activities

- Focus on keeping best possible response time
- No holidays
- Lower priority
 - Audits
 - Policy implementation activities
 - Abuse reports
 - Presentations at events and training courses
 - Processing changes in end user contracts
 - Mergers and takeovers

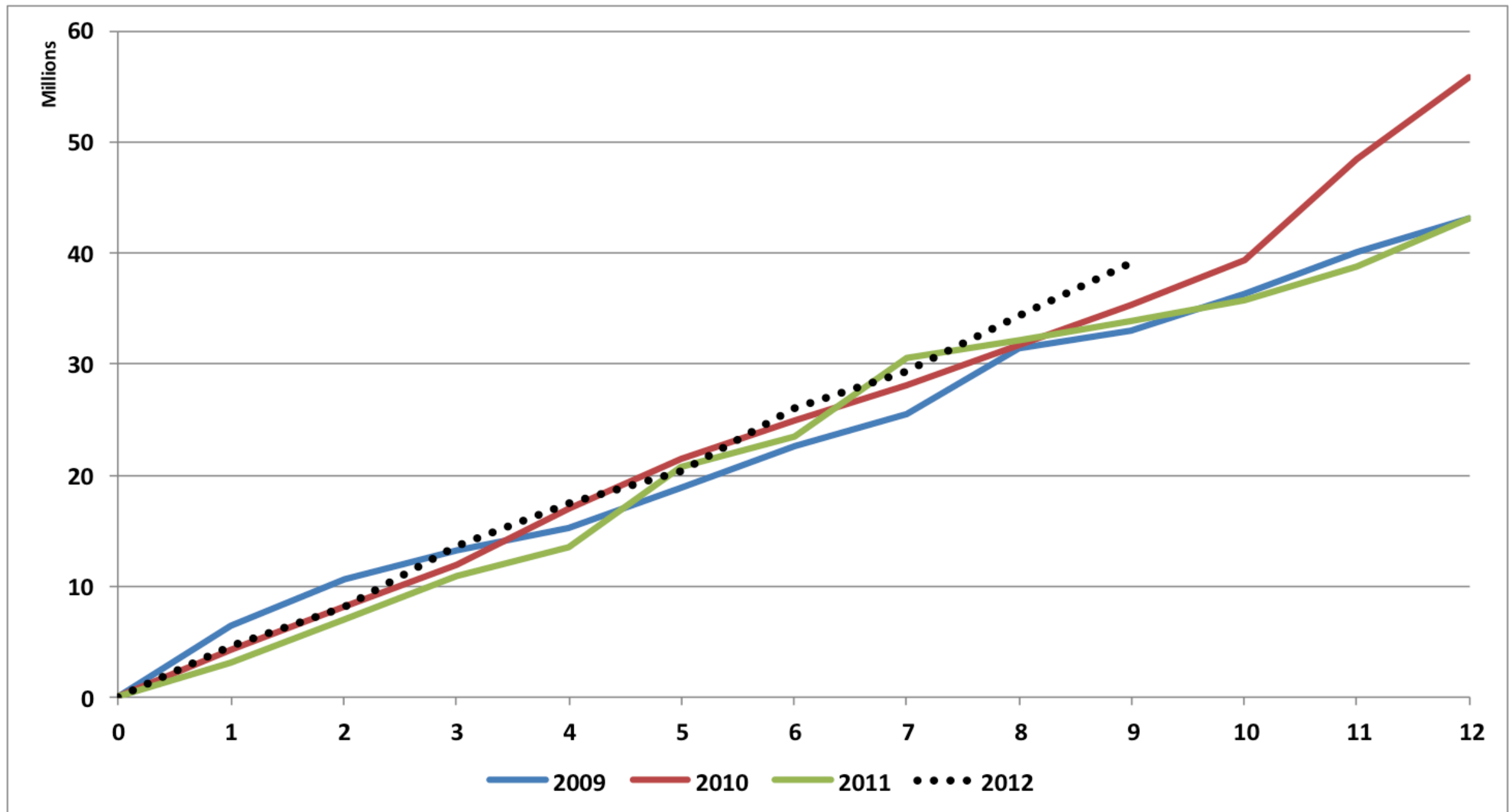
New IPv4 Requests



Requested Vs. Available IPv4 Addresses



Cumulative IPv4 Address Space



Some Stats...

- IPv4 address space issued during phase 1
 - Total allocated prefixes: 162
 - Total allocated IPv4 addresses: 3383296 (/11,/12,/15+)
 - Total LIRs: 147
 - Total assigned prefixes: 186
 - Total assigned IPv4 addresses: 228160 (/15,/16,/18+)
 - Total organisations: 130
-
- From the last /8, $160 * /22$ allocated so far

Questions?

